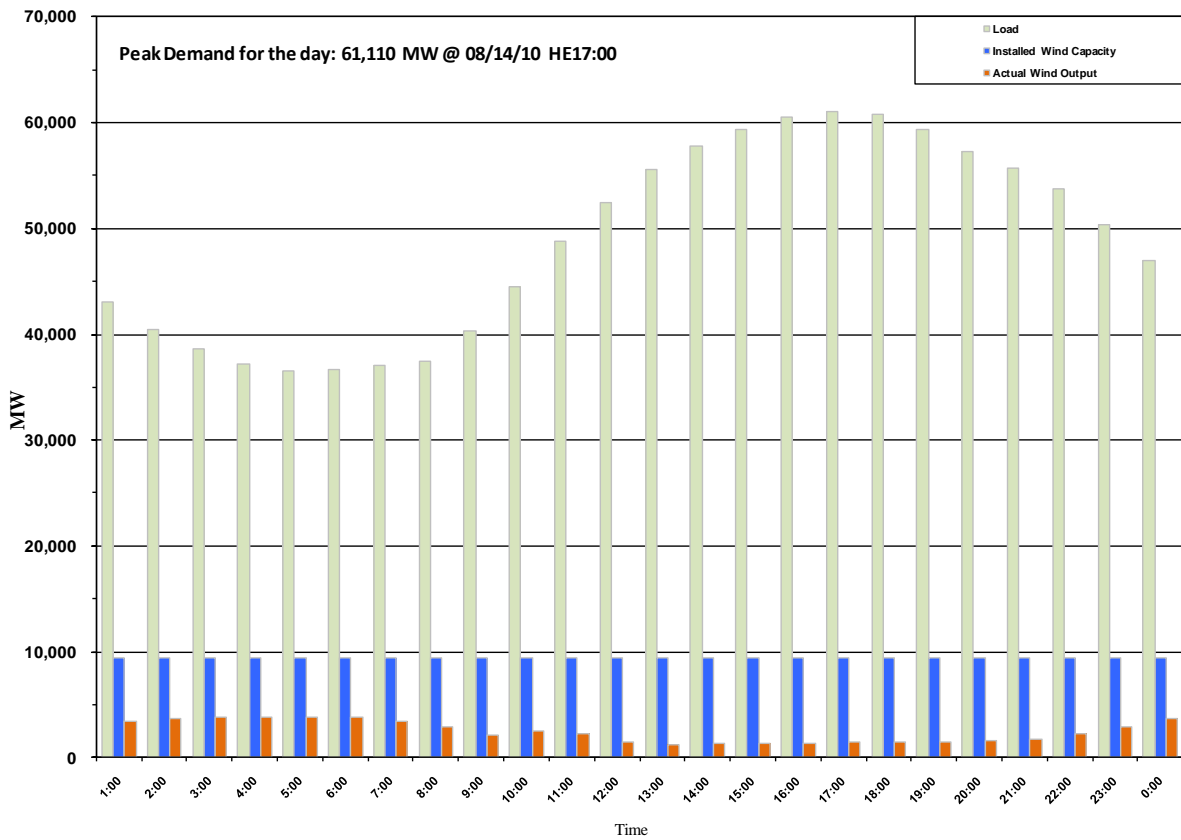




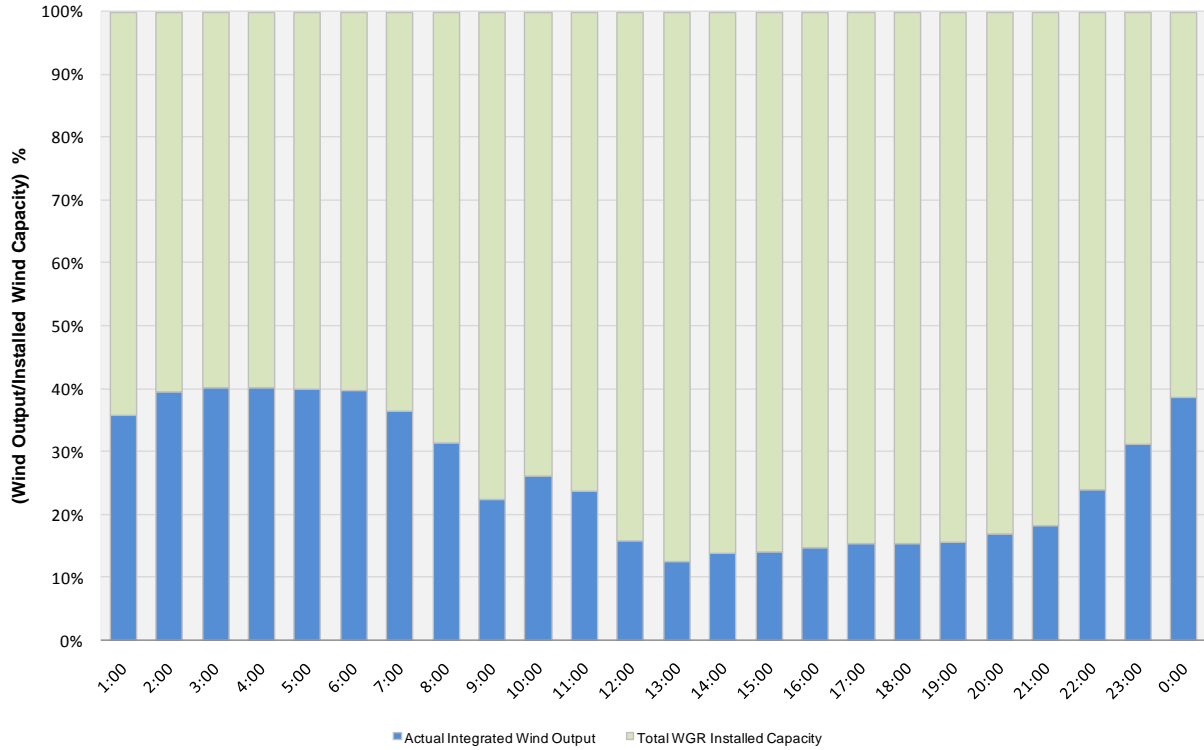
ERCOT Grid Operations Wind Penetration Report: 08/14/10

Peak Load	61,110 MW
Load Peak Hour	17
Wind Record 06/12/10	7016 MW
Max Wind value	3968 MW
Wind Peak Hour	23:58:52
Wind Penetration %	8.74

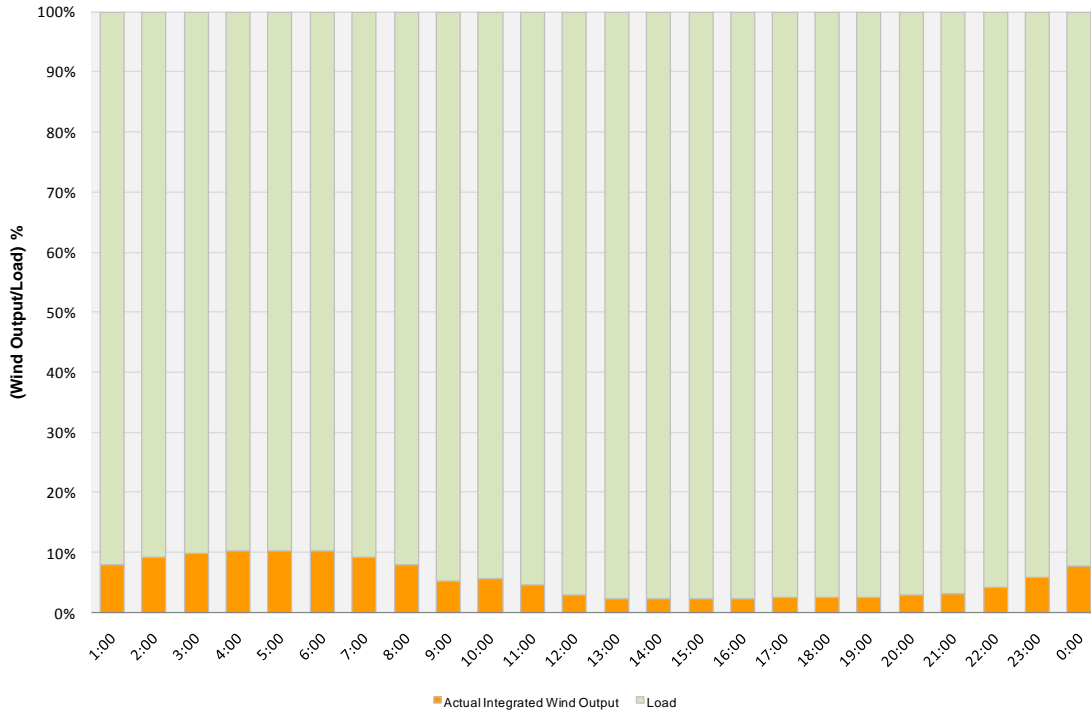




Actual Wind Output as a Percentage of the Total Installed Wind Capacity 08/14/2010



Actual Wind Output as a Percentage of the ERCOT Load 08/14/2010





ERCOT Load vs. Actual Wind Output 08/07/10 - 08/14/10

